



FCC Group

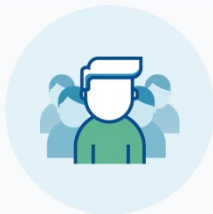


1. FCC Group
2. Key figures
3. Diversified business model
4. Leadership position in all areas
5. International presence
6. Integrated Offer
7. Value Creation
8. Corporate Governance Structure
9. Management Team





More than
120 years
of experience



Over
59,000
employees



Working in
Over **25 countries**,
41% of revenue comes
from international markets



High degree of
**revenue
stability**



Leader
in Environment, Water,
Infrastructure and Real Estate
Development



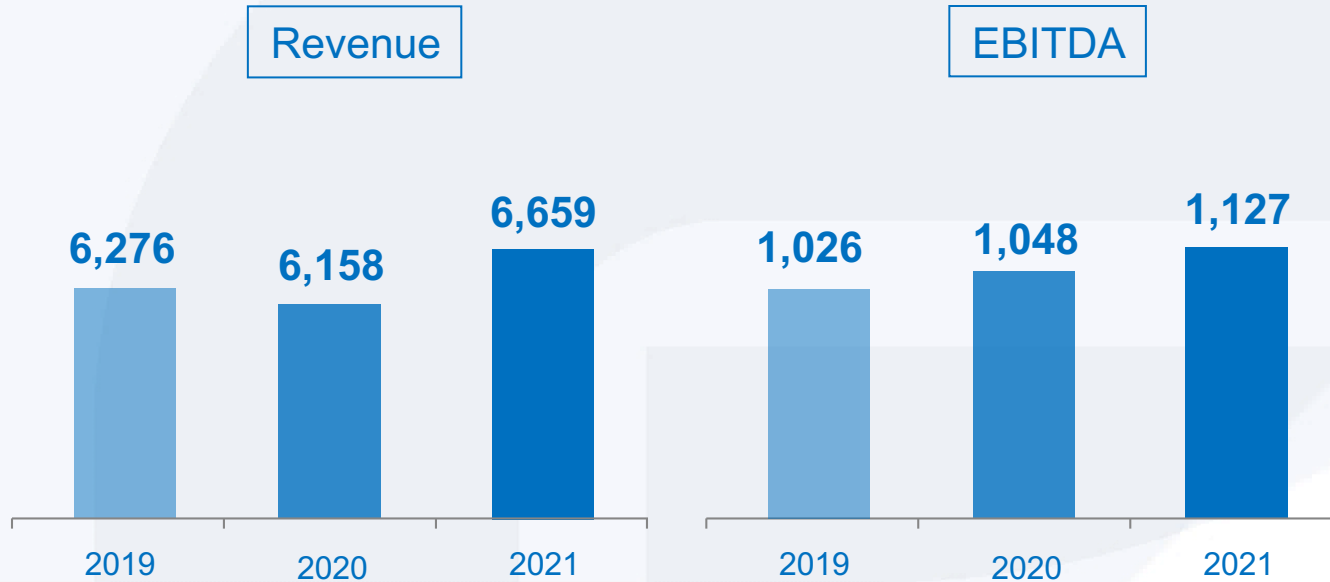
€ 6,659 M revenue
1,127 M€ EBITDA in 2021



Comprehensive range
de services

FCC Group

1.2. Key Figures 2021



Backlog* (Dec. 31, 2021)

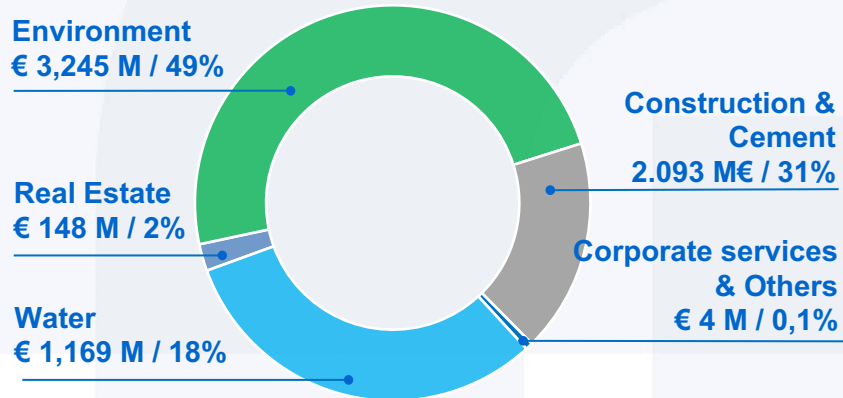
€ 30,197 M

Environment, Water, Construction
and Real Estate

Figures in million euros

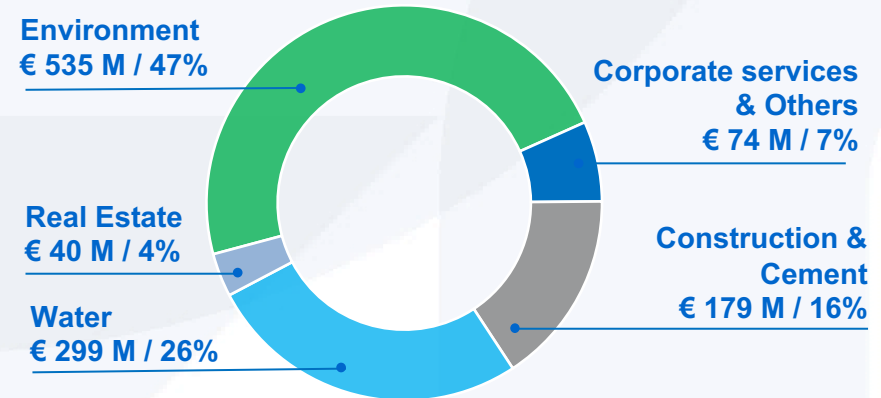
Revenue per business / 2021

Total: € 6,659 M



EBITDA per business area / 2021

Total: € 1,127 M



FCC Group

1.3. Diversified business model



Environment

- Refuse collection
- Street cleaning
- Solid waste treatment and recycling
- Ground maintenance
- Sewer networks maintenance
- Building Cleaning & maintenance
- Industrial waste treatment and recycling
- Remediation of polluted soils



Water

- Municipal concessions for the management of the end-to-end water cycle
- Infrastructure concessions in BOT model contracts
- O&M Services
- EPC Models



Construction

- Civil Works
- Railway Works
- Building
- Industrial
- Concessions
- Infrastructure maintenance
- Construction precast
- Corporate image



Cement

- Cement
- Trading
- Other businesses
(Concrete, Aggregate, Mortar)

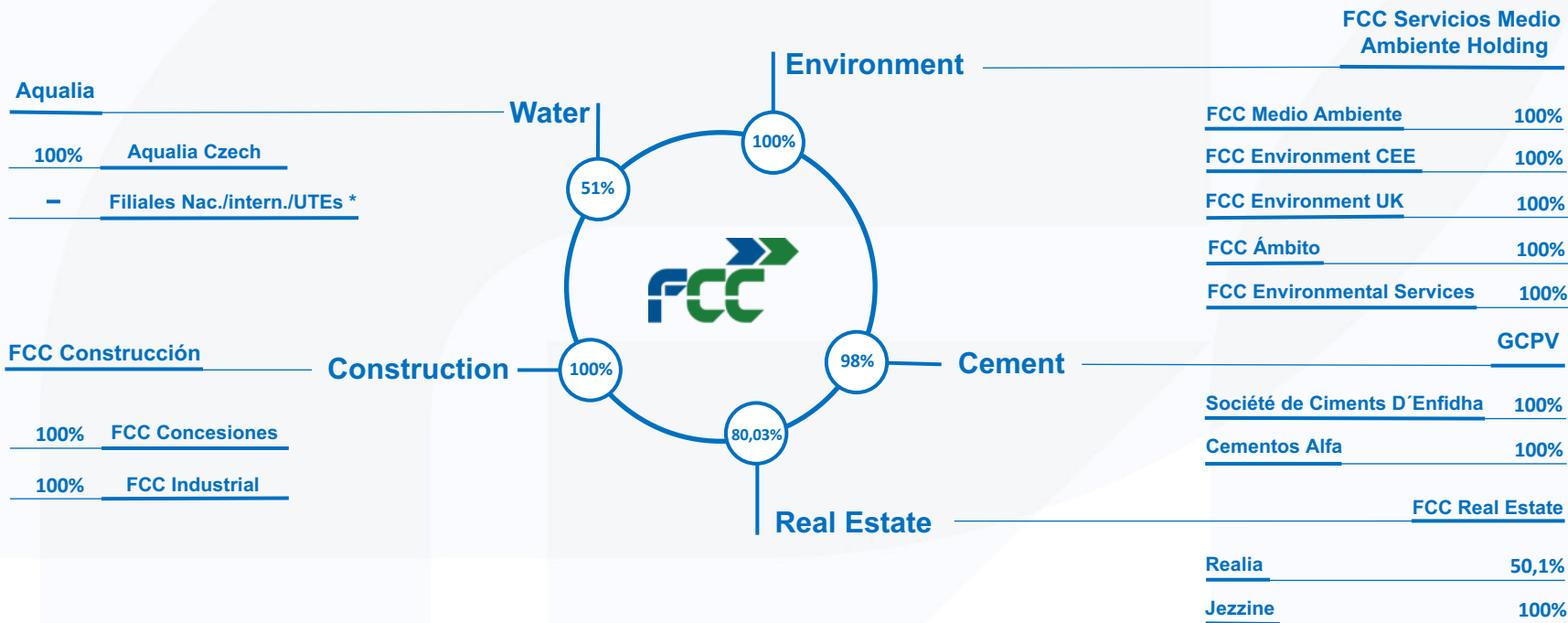


Real Estate

- Housing development
- Real Estate rentals
- Land management

FCC Group

1.3. Diversified business model



* Different percentage of shares

FCC Group

1.4. Leadership position in all areas



Environment:

- #1 in Spain (1)
- Among the top 5 in waste management in the United Kingdom(1)
- #1 in end-to-end waste management in Central and Eastern Europe (1)
- More than 8 million citizens serviced in the USA

Water:

- #1 in Spain (2)
- #4 in Europe (2)
- #9 in the World (2)

Construction:

- #4 in Spain (1)
- Among the 15 largest construction companies in Europe(1)

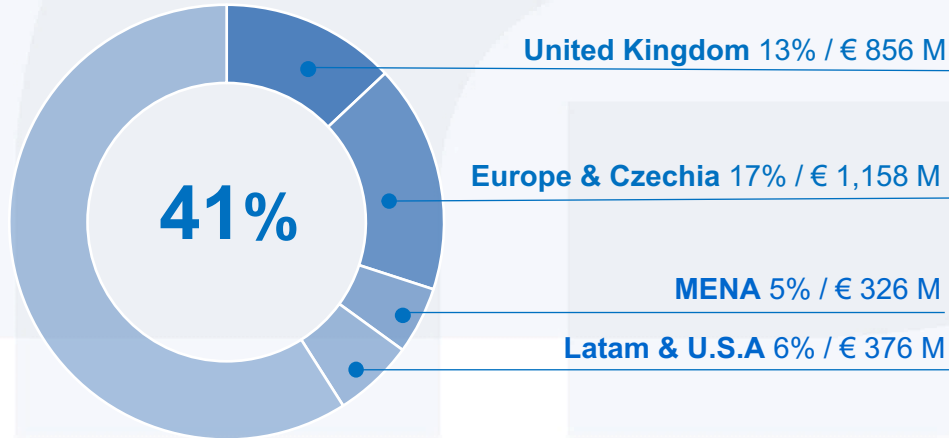
Cement:

- #1 producer in Spain (1)
- Large presence in Tunisia

(1) By revenue volume
(2) Source: March 2021 GWI ranking

International Revenue 2021

Total : € 2,716 M



International Backlog*
(Dec. 31, 2021) **€ 15,270 M** (2,3 years)

***51% of Total**

Advanced technology

- Own technology for waste collection and street cleansing
- Leaders in waste recycling and energy recovery systems
- Experts in providing solutions at all stages of the water management cycle for all uses: human, agricultural and industry, meeting the needs of institutions and public and private organizations
- Specialists in bridges and ports with a high technical complexity
- Innovative processes for high speed lines, metro and tunnels
- Specialists in turnkey projects in the industrial sector

Comprehensive range of services throughout the whole value chain



Advanced technology and integrated range of products and services with high added value in all of its business areas

FCC Group

1.7. Value creation



Our incumbent position enhances our ability to benefit from the strong fundamentals of our core business areas



Environment

- Positive long-term outlook due to regulatory developments and environmental considerations
- EU Waste Framework Directive requires member states to recycle at least 55% of their municipal solid waste by 2025 and 65% by 2035 plus landfilling up to 10% also in 2035
- New opportunities offered by expected reforms in Spain on recycling and composting
- Organic international expansion potential, particularly in America, UK and some Central European countries



Water

- Positive long-term outlook due to regulatory developments and environmental considerations
- Increase in water consumption, both industrial and residential, in Spain with economic recovery
- International growth and expansion that responds to global needs for clean water and sanitation for all, with the right people and technology.
- Growth potential in Latam, MENA and America



Construction & Cement

- Continued infrastructure gap in selected emerging markets providing further upside
- Potential growth in Spain based on Next Generation EU plan linked to clean energy, efficiency and related facilities.



Real Estate

- Combined recurring rental income with a focus on improving its sustainability profile with the development of real estate assets (build-to-rent) and residential housing in high-demand areas based on active land management.

FCC Group

1.7. Value creation



Experience
More than 120 years
creating value for citizens



Internationalization
Operating in over 25 countries



**Innovation and
technological capacity**



Professionalism
Over 59,000 professionals
specialising in different areas



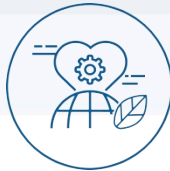
Protecting the Environment
More than 63 M euros for the
prevention of environmental risks
Environmental management systems
certified according to **UNE-EN ISO 14001**
in all business areas



Quality
Quality management systems
certified according to **UNE-EN ISO 9001**
in all business areas



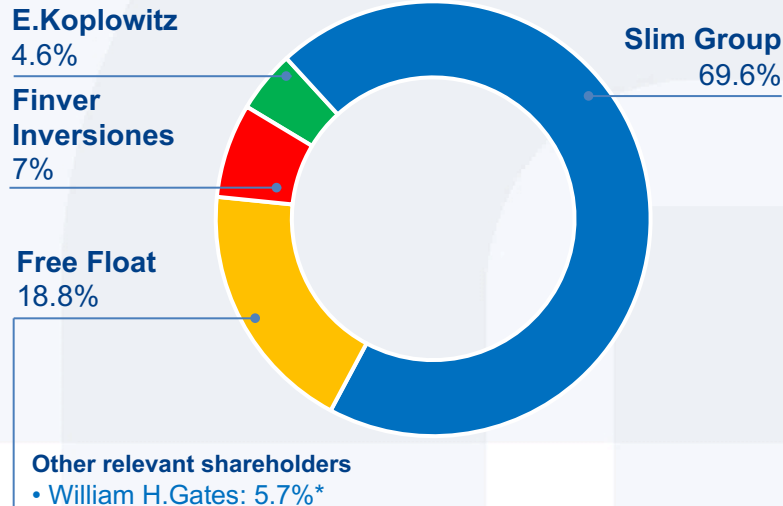
Local development commitment
Over 4 million euros allocated to
Projects for local development in 2021



Health and Safety
Occupational health and safety management systems
certified according to **ISO 45001** in all business areas



Shareholding Structure*



Composition of the Board

14 members:

- 6 appointed by Slim Group
- 4 appointed by E.Koplowitz
- 3 independent members
- 1 executive director

Audit and Remuneration Board Commissions:

- Chaired by independent members

* As of latest communications to the CNMV (Spanish stock market regulator)

FCC Group

1.9. Management Team



Chairman FCC Esther A. Koplowitz

CEO Pablo Colio Abril

Business Areas

Construction

Pablo Colio Abril

Environment

Jordi Payet Pérez – Iberia

Paul Taylor – U.K.

Bjoern Mittendorfer- CEE

Iñigo Sanz - America

Water

Félix Parra Mediavilla

Cement

Gerardo Kuri Kaufmann

Real Estate

Gerardo Kuri Kaufmann

Business Areas



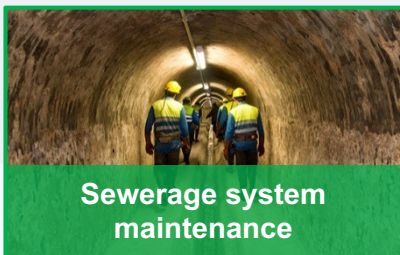
1. Environment
2. Water
3. Construction
4. Cement
5. Real Estate

2

2.1.Environment



Activities



2.1.Environment



Providing services to cities since 1911



Top 7 in the world



Serves over 60 million citizens



Most technologically advanced vehicle fleet in the world with over 17,200 units



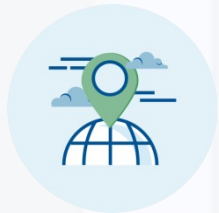
Over 770 waste treatment, recycling and disposal centres



ISO 50001 certificate Comprehensive Energy Management



Management of 24 million tons waste per year



Operating in over 5,000 municipalities



About 2,600 sustainable vehicles (CNG, electric, hybrid and bi-power)



Over 40,000 employees



Inclusion of underprivileged groups in the workplace

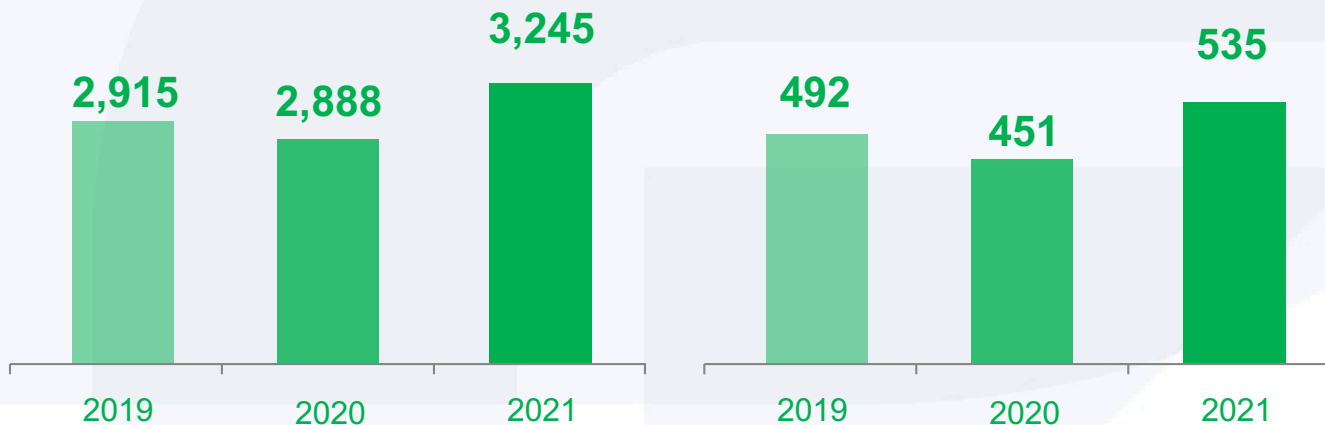
2.1.Environment

Key Figures 2021



Revenue

EBITDA



Backlog (Dec 31. 2021)
10,746 M€

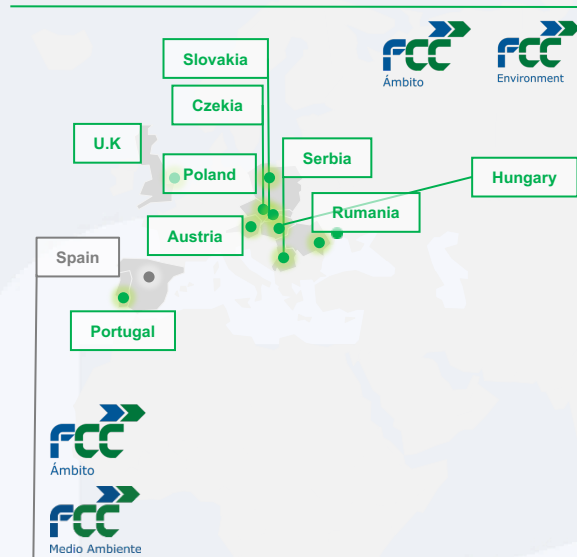
Figures in million euros

2.1.Environment

International Presence

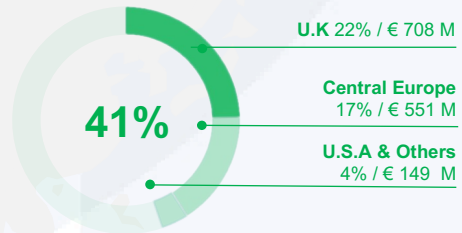


U.S.A



International Revenue 2021

Total : 1,408 M€



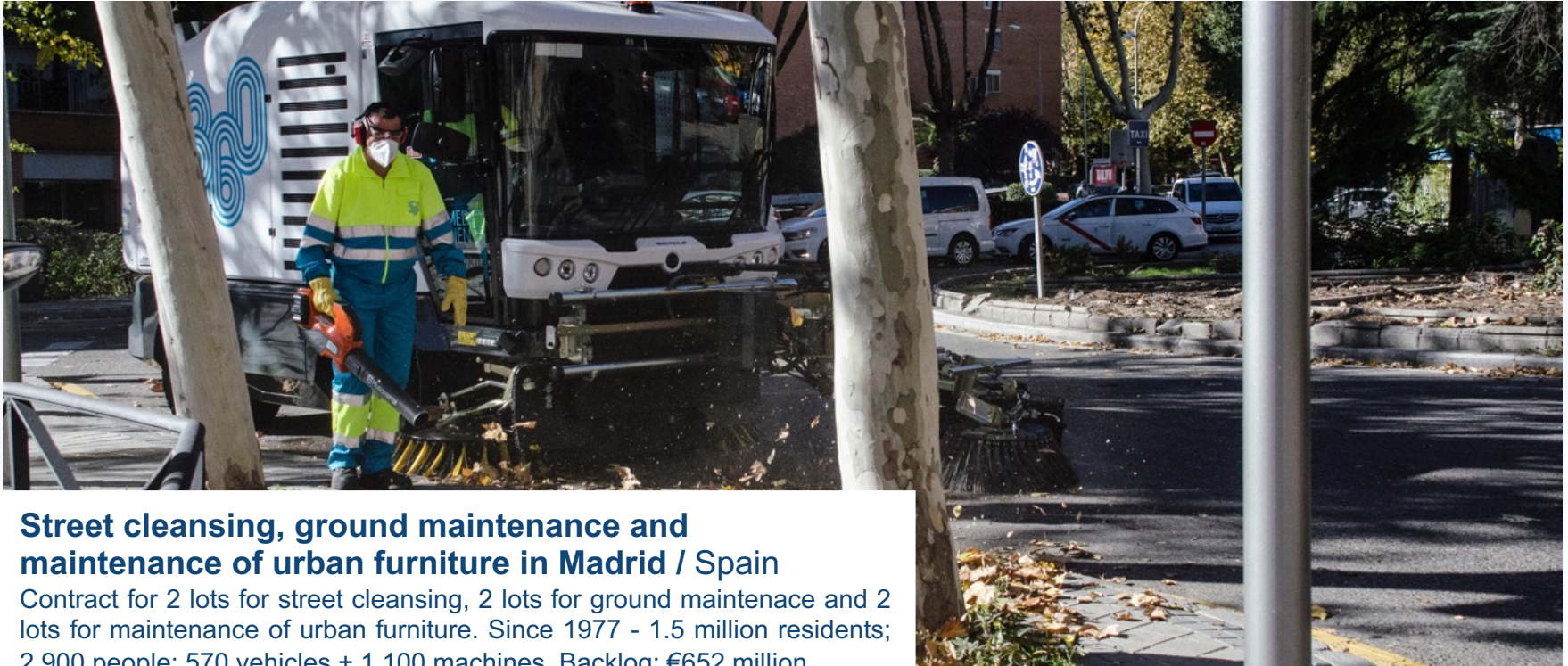
International Backlog*

(Dec. 31, 2021) **€4,446 M** (1.3 years)

*41.5% of Total

2.1.Environment

Main references



Street cleansing, ground maintenance and maintenance of urban furniture in Madrid / Spain

Contract for 2 lots for street cleansing, 2 lots for ground maintenance and 2 lots for maintenance of urban furniture. Since 1977 - 1.5 million residents; 2,900 people; 570 vehicles + 1,100 machines. Backlog: €652 million.

2.1.Environment

Main references



Waste Collection and Street Cleansing in Barcelona / Spain

City centre and Ciutat Vella. Since 1915 - 572 vehicles, over 65% electric; 1,081 people, 593 km streets covered / 268,000 tonnes per year. Backlog: €830.87 million. 8 + 2 years.

2.1.Environment

Main references



Waste collection and construction of the new Waste Treatment Plant in the Pamplona Region / Spain

Contract for waste collection, construction and commissioning of the new Waste Treatment Plant - Since 1983 - 370,000 residents. Backlog: €114.8 million.

2.1.Environment

Main references

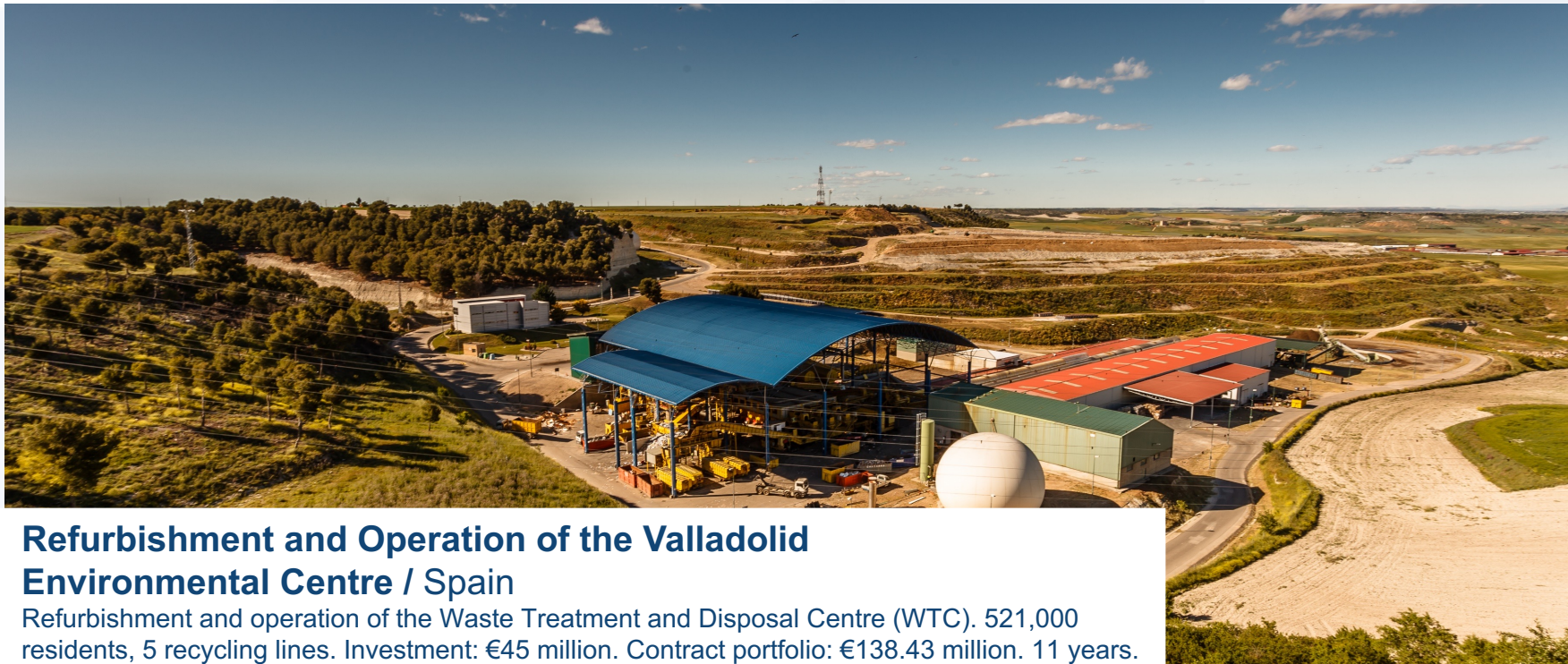


Resource Recovery Centre in Loeches, for the Eastern Municipalities Association of the Region of Madrid / Spain

New comprehensive Resource Recovery Centre. Investment: €58 million. 730,000 residents served. 31 Municipalities, 5 recycling lines - 254,000 tonnes of waste per year.

2.1.Environment

Main references



Refurbishment and Operation of the Valladolid Environmental Centre / Spain

Refurbishment and operation of the Waste Treatment and Disposal Centre (WTC). 521,000 residents, 5 recycling lines. Investment: €45 million. Contract portfolio: €138.43 million. 11 years.

2.1.Environment

Main references



Transport and treatment of municipal waste in West Tyrol region/ Austria

Rail transport and energy recovery of municipal waste at the Zistersdorf plant for the West Tyrol Waste Disposal Association. Backlog: €33 million. 5 years.

2.1.Environment

Main references



Waste Collection and Treatment in Zabrze / Poland

Waste collection and treatment. Backlog: €11 million. 2 years.

2.1.Environment

Main references



Zistersdorf Energy Recovery Plant / Austria

150,000 tonnes per year with 14.5 MW net electrical power, with an annual export of energy to the grid of 106,000 MWh, enough to supply more than 30,000 households.

2.1.Environment

Main references



Management of 9 Household Recycling Centres in Buckinghamshire / United Kingdom

Management of 9 household recycling centres - Since 2012 - 221,000 households (540,000 residents). 60,000 tonnes of waste per year. Backlog: €18 million. 5 + 5 years.

2.1.Environment

Main references



Food waste collection and recycling collection contract in East Lothian / United Kingdom

Food waste and recycling collection. 106,000 residents. 40 people. 15 recycling vehicles. Backlog: €26.14 million. 8 years.

2.1.Environment

Main references



Lostock sustainable energy recovery plant / United Kingdom

Development of a 600,000 tpa waste-to-energy plant in partnership with Copenhagen Infrastructure Partners (CIP), with an investment of £480 million.

2.1.Environment

Main references



Edinburgh and Midlothian Zero Waste Plant / United Kingdom

New Millerhill Recycling and Energy Recovery Centre (Midlothian). 25-year operating period. Management and treatment of 160,000 t/year. Production capacity of 14.2 MW that will supply power to 32,000 households.

2.1.Environment

Main references



Solid waste collection in The Village of Wellington / Florida (U.S.A.)

Residential urban solid waste collection service. 64.000 inhabitants. Attending more than 670 commercial businesses clientes. Backlog \$135 million 10 + 5 years.

2.1.Environment

Main references



Hillsborough waste collection / Florida (U.S.A.)
Contract of residential and commercial solid waste collection. 105,000 households. 96 CNG vehicles. Backlog: €280 million. 8 years and 8 months.

2.1.Environment

Main references

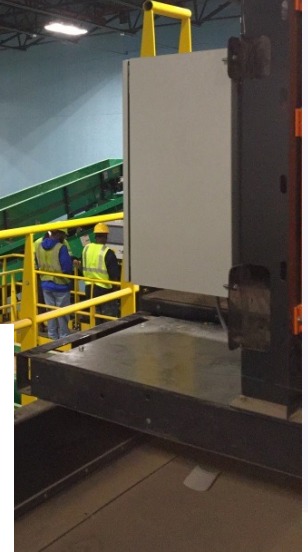


Recycling Facility / Dallas (U.S.A.)

Design, Financing, Construction and Operation. Term of operation: 25 years.

Backlog: € 300m. **Service:** 140,000 t. recyclables / year. **Best Recycling Facility of 2017 by the U.S.**

NWRA. Management of recyclables in the cities of Dallas, University Park, Garland, Rowlett and Mesquite (Dallas Metroplex Area).



2.1.Environment

Main references



Recycling plant / Houston (Texas, U.S.A.)

Design, Financing, Construction and Operation. Operation period: 15+5 years. Backlog: \$250 million. Up to 145,000 t of recyclables / year. Houston recyclable management, 2.3 million residents. **Best Recycling Facility of 2020 by the US NWRA.**

2.2.Water



Activities



Municipal concessions for the management of the end-to-end water cycle

Management of public services such as collection, treatment, potabilisation, distribution, sanitation and purification, as well as water quality analysis..



Infrastructure concessions in BOT model contracts

Design, construction, financing and long-term operation of infrastructures, treatment plants (drinking water treatment, purification and desalination) or reuse facilities.



O&M services

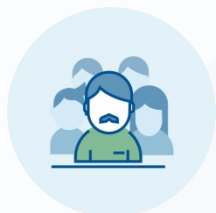
Operation, maintenance and exploitation of infrastructures



EPC Models

Engineering, Procurement and Construction

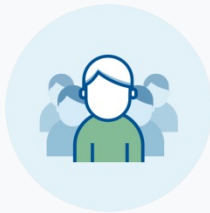
2.2. Water



29,662,500
Population served
(GWI)



17
Countries
presence



9,818
Employees



866
WWTP's



45,399 km
of managed
networks



239
WPP's



708 hm³/year
Drinking water
produced



28
IDAM's



2,867
Drinking water
repositories



Laboratories
certified according to
ISO-17025



22
Sports
centres

* GWI (March 2021)

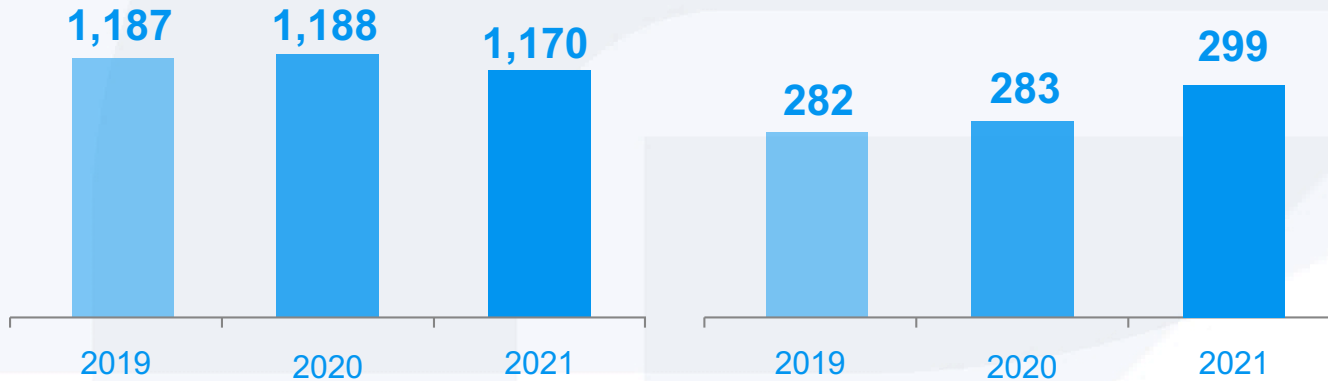
2.2. Water

Key Figures 2021



Revenue

EBITDA



9,818
employees



Backlog (Dec. 31, 2021)
€ 15,361 M

Figures in million euros

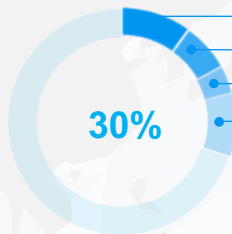
2.2. Water

International Presence



International Revenue 2021

Total : 404 M€



Central Europe 10% / € 114 M

Rest of Europe 7% / € 81 M

Latam 4% / € 49 M

MENA 9% / € 112 M



International Backlog*

(Dec. 31, 2021) € 8,212 M (7 years)

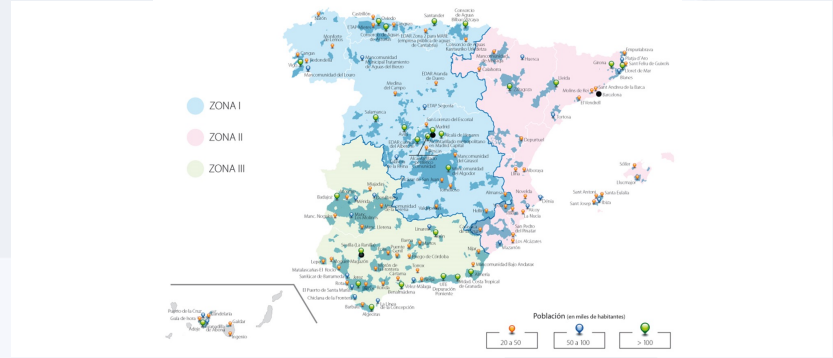
*53.5% of Total

2.2. Water

Spain. Main references



WWTP Avila



CRM



Aqualia team, Santander

2.2. Water

Spain. Main references



Mar de Alborán Desalination Plant (Níjar-Almería)

The previous Rambla Morales Desalination Plant. Acquired in 2019 by Servicios Hídricos.
The infrastructure is currently being rehabilitated and there are plans to build a photovoltaic plant.

2.2. Water

Spain. Main references



Ibiza Desalination (Ibiza, Santa Eulalia and San Antonio)

Management of the 3 desalination plants on the Ibiza island, with a production capacity of 45,000 m³/day, supplying 10 million m³ of water per year. Population: 150,000 inhabitants. Client: Agencia Balear del Agua (ABAQUA)

2.2. Agua

España. Principales referencias



Oviedo

Único municipio en Asturias que cuenta con tratamiento del agua potable con ozono para generar 1.500 l/s de agua de gran calidad. Gestión desde 1996. Población: 220.000 hab. Cliente: Ayuntamiento de Oviedo. Sede del laboratorio de referencia de Aqualia en España

2.2. Water

Spain. Main references



Salamanca

Pioneers in Spain in the application of R+D+i for the elimination of nutrients in return water from purification. Management since 1997. Population: 200,000 inhabitants. Client: Salamanca City Council.

2.2. Water

Spain. Main references



Vigo

Managing, since 1991, the largest hydraulic infrastructure in Galicia.
Population: 218,000 inhabitants. Client: Vigo City Council.

2.2. Water

Latam. Main references



Aqueduct of Queretaro / Mexico

Service: Pumping, Water Treatment, Gravity flow, Distribution and Storage.

Extension: 128 km of pipeline, reservoir, tunnel (4.8 km), pumps, tanks and water treatment plant.

Type of project: BOT (20 years). Client: Querétaro State Water Commission. Capacity: 130,000 m³/day.

Population: 900,000 inhabitants. Managed since 2011.

2.2. Water

Latam. Main references



Aqueduct of El Realito / Mexico

Service: Piping and purification of water from El Realito dam to San Luis de Potosí.
Extension: 132 km of pipes, pumps, tanks and water treatment plant (86,400 m³/d).
Type of project: BOT (25 years). Client: San Luis de Potosí State Water Commission.
Population: 430,000 inhabitants. Managed since 2011.

2.2. Water

Latam. Main references



End-to-end water Cycle / Colombia

Management of the end-to-end water cycle since 2019 in 13 municipalities, providing service to more than **450,000 inhabitants**. 12 municipalities are located in the department of Córdoba and the last one in Cúcuta, Norte de Santander.

2.2. Water

Latam. Main references



El Salitre / Colombia

Service: Expansion and improvement of the El Salitre Wastewater Treatment Plant, in Bogotá.
Capacity: **600,000 m³/day**. Serving more than **3 million inhabitants**.



2.2. Water

Africa. Main references



Desalination Plant of Mostaganem / Algeria

Type of project: BOT (25 years). Client: SONATRACH/AEC.
Capacity: **200,000 m3/d**. Serving more than **1.2 million of people**

2.2. Water

Africa. Main references



Desalination Plant in El Alamein / Egypt

Capacity: **150,000 m³/d**. Service to **1 million inhabitants**.

Client: **MINISTRY OF DEFENSE**.

2.2. Agua

Europa. Principales referencias



República Checa - SmVaK

Proyecto: Gestión Integral del Agua es el principal operador de las regiones de Moravia y Silesia. SmVaK es propietaria de las infraestructuras (siendo por tanto una actividad de duración indefinida). Es uno de los pocos casos existentes de suministro de agua transfronterizo, dando servicio por medio de sus infraestructuras a **100.000 habitantes** en la vecina Polonia.

SmVaK, filial de Aqualia cuenta con **1.200.000 usuarios** y posee una red de suministro que mide **4.627 kilómetros** y una red de alcantarillado de **1.379 kilómetros**.



2.2. Water

Europe. Main references



France - SEFO / CEG

Serving **140,000 inhabitants** in the Île de France region (France):
8 supply management contracts and 2 sanitation contracts through the companies SEFO and CEG. Management of 700 kilometers of distribution networks, 32 water storage tanks and 70 pumping stations, as well as 200 kilometers of sewage networks.

2.2. Agua

Europa. Principales referencias

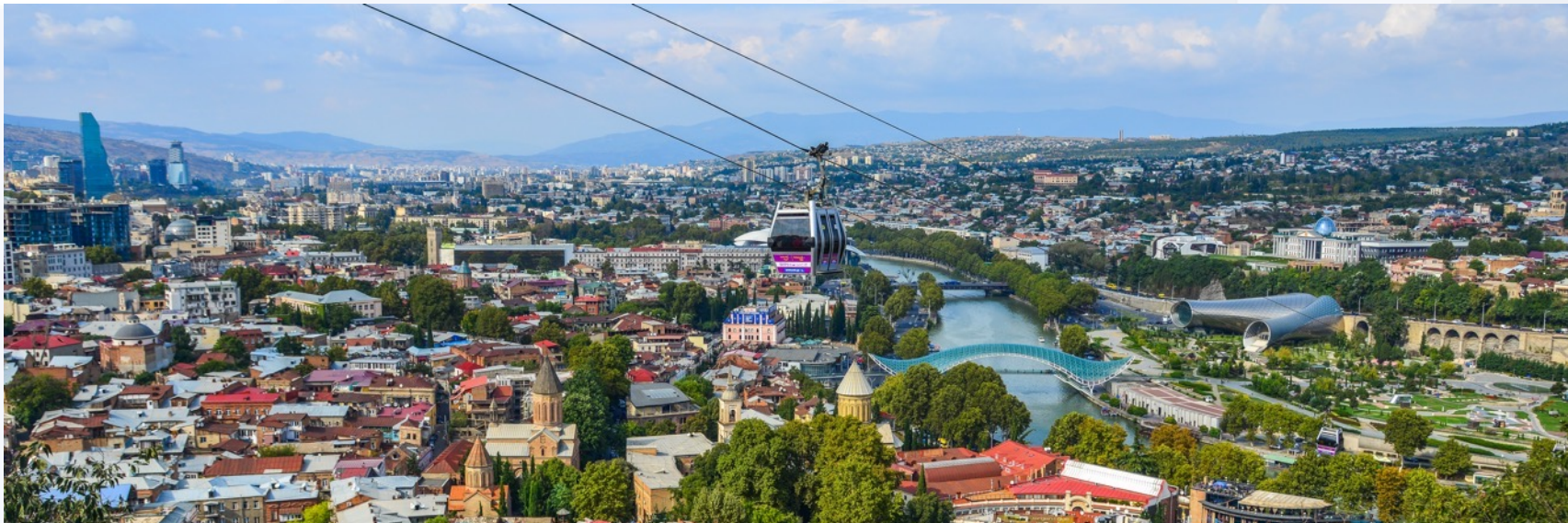


Gestión 16 municipios Île-de-France (París) / Francia

Gestión del abastecimiento de agua de 16 municipios. Concesión del suministro de agua potable durante 6 años y por un importe cercano a los 30 millones de euros.

2.2. Agua

Europa. Principales referencias



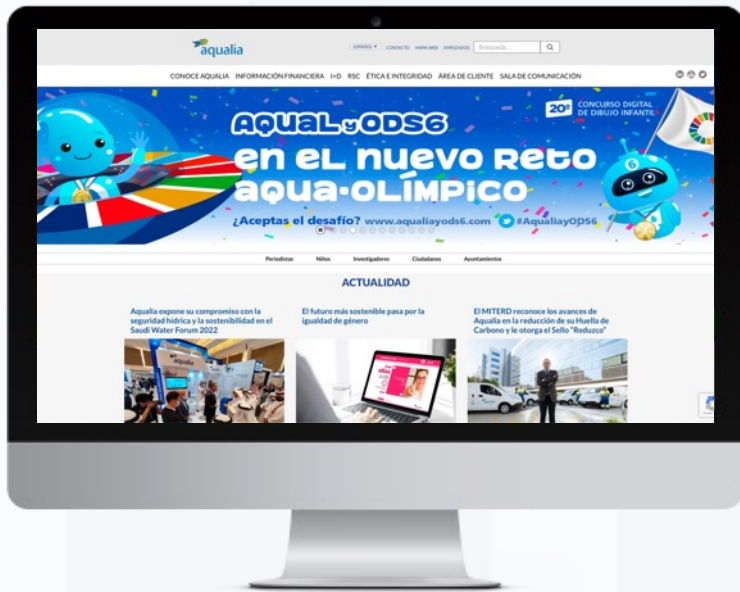
Georgia GGU / GCAP

Red: 7 plantas Potabilizadoras (ETAP), 1 gran Planta de Tratamiento de Aguas Residuales (EDAR), 58 Estaciones de bombeo, 118 depósitos y 4.300 kilómetros de redes de distribución y 1.700 km. de alcantarillado.

Suministro: 240 MW en 9 plantas mayoritariamente hidroeléctricas, algunas de ellas asociadas a los activos del ciclo del agua (150 MW) y otras independientes (90 MW).



2.2. Water Webs



www.aqualia.com

Webs

[Adeje](#) (Tenerife)

[Linares](#) (Jaén)

[Lleida](#)

[Alcalá de Henares](#)

[Almería](#)

[Ávila](#)

[Calahorra](#) (La Rioja)

[Écija](#) (Sevilla)

[El Vendrell](#) (Tarragona)

[Entemanser](#)

[Granadilla de Abona](#)

(Tenerife)

[Guía de Isora](#) (Tenerife)

[Ingenio](#) (Gran Canarias)

[Jaén](#)

[San Miguel de Abona](#)

(Tenerife)

[Jerez de la Frontera](#) (Cádiz)

[Lloret de Mar](#) (Girona)

[Medina del Campo](#)

(Valladolid)

[Mérida](#) (Badajoz)

[Muro](#) (Valencia)

[Narón](#) (A Coruña)

[Nerja](#) (Málaga)

[Oviedo](#) (Asturias)

[Puerto de la Cruz](#) (Tenerife)

[Salamanca](#)

[San Lorenzo de El Escorial](#)

[Santander](#)

[Talavera de la Reina](#)

[Vélez Málaga](#) (Málaga)

[Vigo](#)

[Santa Marta de Tormes](#) (Salamanca)

[Santiago del Teide](#) (Tenerife)

[Sanlúcar de Barrameda](#) (Cádiz)

[Ostrava](#) (República Checa)

[Caltanissetta](#)

[Campomaior](#) (Portugal)

[Elvas](#) (Portugal)

[Fundao](#) (Portugal)

[Francia](#)

[Colombia](#)

Georgia

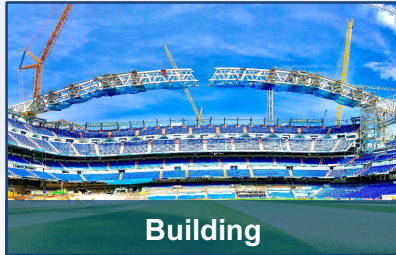
2.3. Construction

Activities



Civil Works

- Railway infrastructures
- Roads
- Bridges
- Tunnels
- Maritime infrastructure
- Airport infrastructure
- Water Infrastructure



Building

- Housing units and estates
- Non-residential buildings
- Rehabilitation



Industrial

- Electromechanical installations and maintenance
- Electrical networks and railway works
- Maintenance
- Industrial Construction
- Systems
- Infrastructure maintenance
- Prefabrication
- Corporate Image

2.3. Construction



Over
120 years
of experience



We are
global and local



Riyadh Metro,
the **largest contract**
awarded in the history
of Spanish construction
(Riyadh Metro, Toronto Railway Network)



Leader
in urban transport
infrastructure



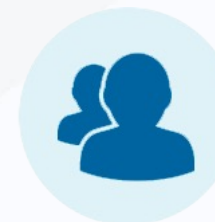
Operating in
over
25 countries



One of the
top 35
construction companies
in the world



**International
benchmark**
in the selective execution of
large civil works (tunnels,
railway, metro)



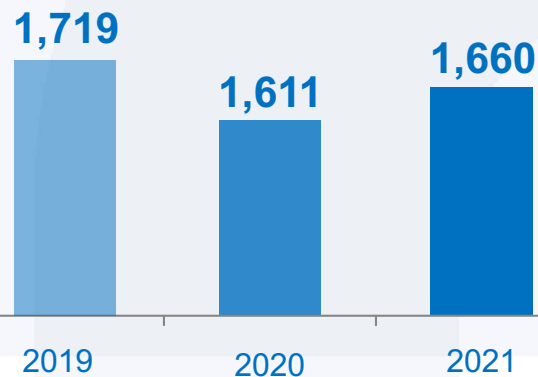
More than 25 million
people use our
infrastructures

2.3. Construction

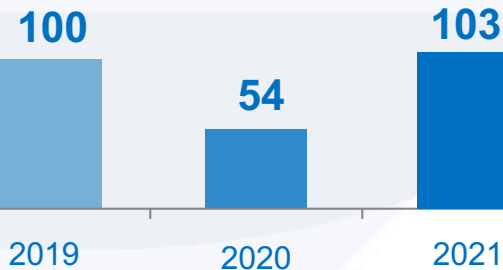
Key Figures 2021



Revenue



EBITDA



 **6,609**
employees



Backlog (Dec. 31, 2021)
€ 3,981 M

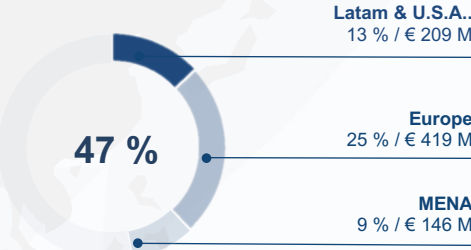
Figures in million euros

2.3. Construction International Presence



International Revenue 2021

Total : € 774 M



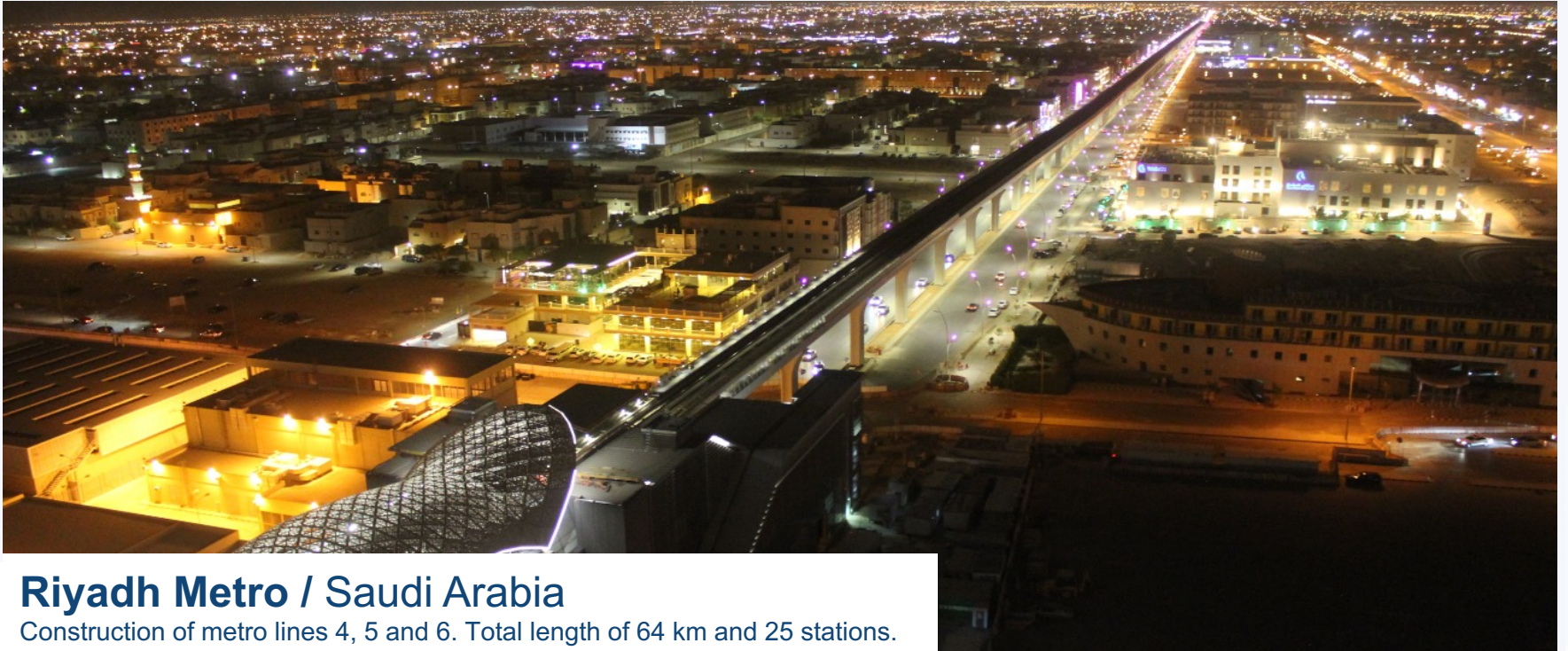
International Backlog*

(Dec. 31, 2021) **€ 2,613 M** (1.5 years)

* 66 % of Total

2.3. Construction

Main References



Riyadh Metro / Saudi Arabia

Construction of metro lines 4, 5 and 6. Total length of 64 km and 25 stations.

2.3. Construction

Main References



Lima Metro / Peru

Construction of 35 underground metro stations across 35 km of tunnels. Line 2 and branch 4. When commissioned, they will serve over 600,000 travellers a day

2.3. Construction

Main References



Panama Metro / Panama
Extension of metro line 2.

2.3. Construction

Main References



Romanian Railway Sections

Over five railway line rehabilitation contracts in Romania, all of them belong to the Pan-European Rail Corridor.

2.3. Construction

Main References



Toronto Railway Network / Canada

2.3. Construction

Main References



Bridge rehabilitation in Pennsylvania / U.S.A.

2.3. Construction

Main References



A9 Badhoevedorp_Holendrecht Motorway / Netherlands

Design, construction, operation, maintenance and financing of the A9 motorway. Remodelling of a 10.4-kilometre section, carried out while maintaining road traffic on the existing motorway.

2.3. Construction Main References



A-465 Sections 5-6 / Netherlands

2.3. Construction

Main References



Sotra Project / Norway

2.3. Construction

Main References



Guillermo Gaviria Echeverri Tunnel / Colombia

Design, construction, operation and maintenance of the Guillermo Gaviria Echeverri tunnel. Once completed, this infrastructure will be the longest of its kind in Latin America.

2.3. Construction

Main References



Tenerife Island Ring Road / España

2.3. Construction

Main References



Jersey Hospital / United Kingdom

2.3. Construction

Main References



Haren Prison / Belgium

Contract for the design, construction, financing, operation and maintenance for 25 years of a new penitentiary complex. Largest prison in Belgium

2.3. Construction

Main References



Santiago Bernabéu stadium refurbishment / Spain

Europe's largest sports infrastructure project

2.3. Construction

Main References



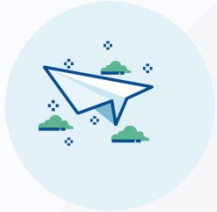
Glina WTP / Rumania

2.4.Cement

Activities



2.4.Cement



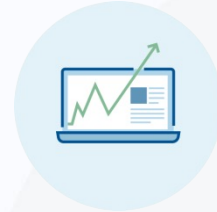
Present in
3 continents



“El Alto” plant, the
second largest cement factory in Europe



Promoting
fuel and alternative raw materials



Spain
Market leader with extensive territorial coverage



Production capacity of
15.6 million tonnes of cement



The **most advanced technology** to guarantee sustainable production



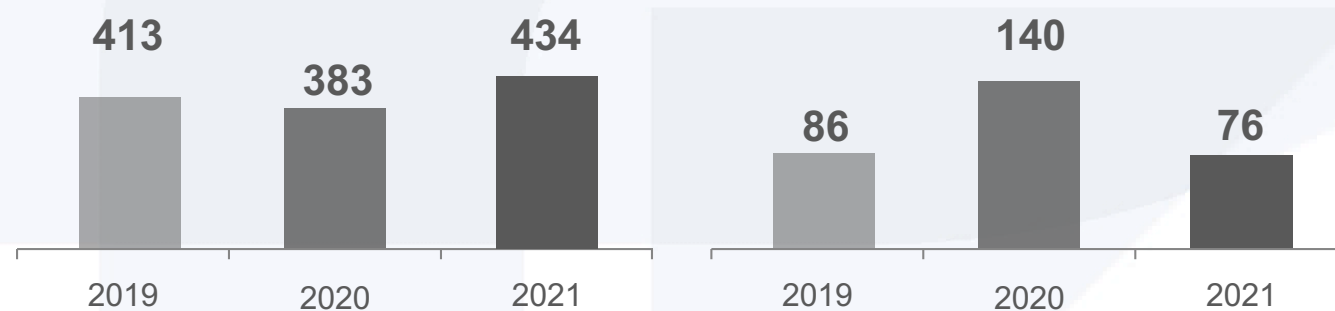
Tunisia
Market leader

2.4. Cement Key Figures 2021



Revenue

EBITDA



Figures in million euros

 **1,038**
employees

2.4. Cement

International presence



*Indirect presence by 45 % in Giant Cement

2.4.Cement

Spain. Main references



El Alto plant / Madrid (Spain)

2.4.Cement

África. Main references



Enfidha plant / Sousse (Tunisia)
Annual production capacity: 2.1 million tonnes / year

2.4.Cement

Main references



Trading

2.4.Cement

Main references



Concrete

2.5.Real Estate



Activities



- Office
- Malls
- Locals & Others
- Build to Rent (BtR)

2.5.Real Estate



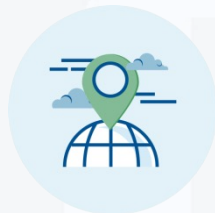
Más de **30 años**
de experiencia



Más de **500.000 m²**
de superficie en alquiler



280 viv. BtR:
85 en explotación
195 en construcción



Más de
2,3 millones m²
de techo edificable



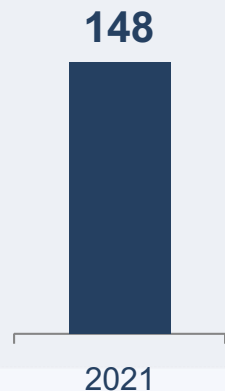
Presencia
Internacional

2.5. Real Estate

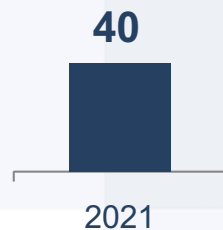
Key Figures 2021



Revenue



EBITDA



Activos (Dec. 31, 2021)
2,942 M€



Backlog (Dec. 31, 2021)
€ 108 M

Figures in million euros

Grupo Realia and Jezzine only contribute to the FCC Group's operations for two months of the year.

2.5. Real Estate

Main references / Office Renting



Torre Realia / The Icon

The world's first leaning office tower is part of the nerve centre of Madrid's economic activity. Designed by the first ever Pritzker Prize winner, Philip Johnson, and his partner John Burgee, its post-modernist style and its 15° tilt make it an essential part of Madrid's skyline.

Total surface area: 28,424 m²
Storeys: 24 Floors + 3 Underground floors
Parking capacity: 351 Spots



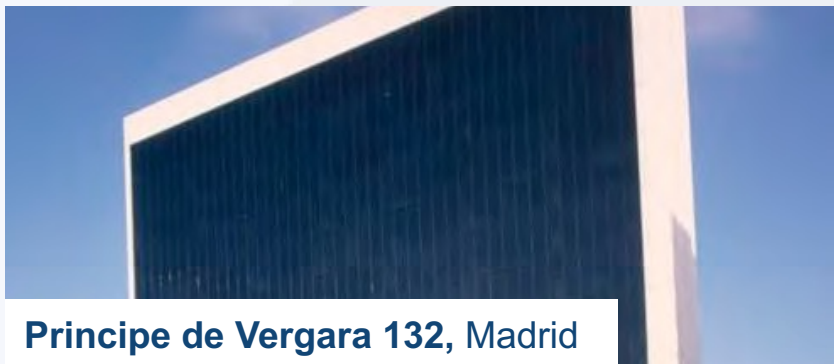
Torre Realia BCN

Prominent building in the Plaza de Europa Business Area. Designed by one of the world's most influential architects, Japan's Toyo Ito (Pritzker Prize 2013) in collaboration with the b720 firm, it forms a unique architectural ensemble in its union with the Hotel Porta Fira. Standing 110 m high, it is one of the tallest buildings in the city.

Total surface area: 31,960 m²
Storeys: 22 Floors + Basement
Parking capacity: 399 Spots

2.5. Real Estate

Main references / Office Renting



Príncipe de Vergara 132, Madrid

The building was completely refurbished in 2012, creating an avant-garde space inside with exclusive materials and design. It boasts a spectacular, modern and unique architecture, with a main façade made of glass on an aluminium structure.

Total surface area: 8,800 m²
Available storeys: 11 Floors
Parking capacity: 140 Spots



Paseo de la Castellana 41, Madrid

It is one of the most representative buildings of modern architecture in the centre of the Prime area of the capital. Its four glazed façades with curtain wall system give prominence to natural light, creating luminous interior spaces. The rooms are characterised by their spaciousness, open-plan design and cutting-edge technology.

Total surface area: 4,590 m²
Available storeys: Ground floor + 7
Parking capacity: 66 Spots

2.5. Real Estate

Main references / Shopping Malls



The Plaza Nueva Shopping Complex is designed in the form of a square and is being built to complete the commercial offer in the south of Madrid and to provide a response to the strong demand from a catchment area of more than one million people.

Gross Leasable Area (GLA): 52,636 m²
Annual visitors: 6.4 million
Parking capacity: 2,987 spots
Shops: 34



This modern shopping complex, with four floors and three basement car parks, with more than 6 million visitors a year, has become the nerve centre of social activity in Guadalajara. Ferial Plaza has a wide and selected commercial and leisure offer and a magnificent location with great visibility from the A2.

Gross Leasable Area (GLA): 32,523 m²
Annual visitors: more than 6 million
Shops: 95

2.5. Real Estate

Main references / Housing



Jardín de Tres Cantos
Madrid (85 homes)



Plot 1.4B Tres Cantos
Madrid (43 homes)



Plot 2.1 Tres Cantos Madrid
(152 homes)

2.5. Real Estate

Main references / Local



Pº de Gracia, 61. Barcelona



Paseo del Prado 22. Madrid

2.5. Real Estate

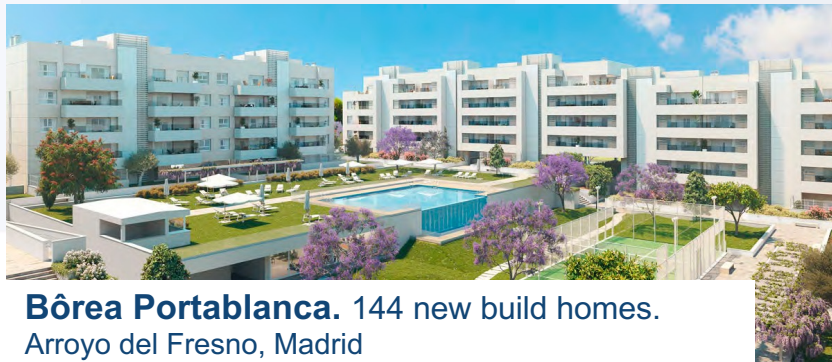
Main references / Housing Development



Glories, Bcn. 47 new build homes
Parc i la Llacuna del Poblenou, Barcelona



Realia Parque del Ensanche Fase II.
80 new build homes. Alcalá de Henares, Madrid



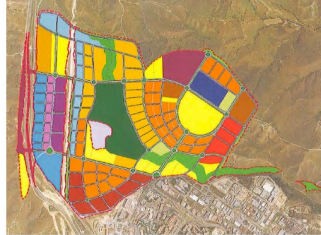
Bôrea Portablanca. 144 new build homes.
Arroyo del Fresno, Madrid



Buenavista Tres Cantos Fase IV.
30 single-family house. Tres Cantos, Madrid

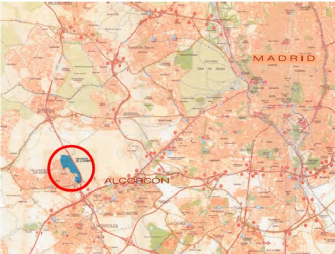
2.5. Real Estate

Main references / Land Management



URBAN

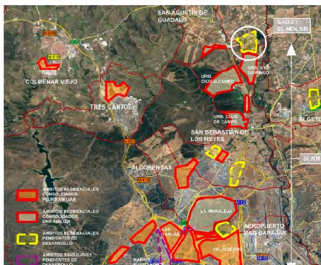
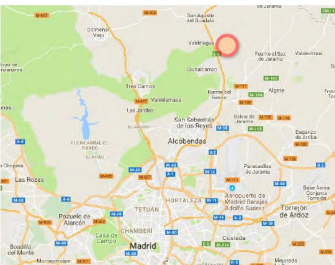
“AR Nuevo Tres Cantos”
 262,450 m² of elevation limit (1,822 homes)
 Tres Cantos, Madrid



BUILDABLE

(Development planning)

“Retamar de la Huerta”
 30,134 m² of elevation limit (291 homes)
 Alcorcón, Madrid.



BUILDABLE

(Pending development planning)

SAU-21 de El Molar
 429,664 m² of elevation limit (2,500 homes)
 El Molar, Madrid

FCC Group Webs



FCC Group



fcc.es

Environment



fccma.com



fcccambio.es



fccenvironmental.com



fccenvironment.co.uk



fcc-group.eu

Construction



fccco.com



fccindustrial.com

Water



aqualia.com

Cement

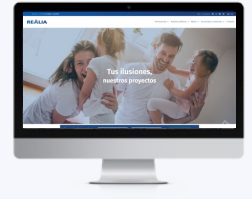


valderrivas.es

Real Estate



fccrealestate.es



realia.es

Disclaimer



- *This document may contain forward-looking statements about intentions, expectations or predictions of the FCC Group on the date of issue, relating to various aspects such as the growth of the different lines of business, results of the FCC Group or other aspects of the business and its status.*
- *These forward-looking statements or predictions do not constitute —by their very nature— guarantees of future compliance, as they are dependent on risks, uncertainties, and other significant factors that could cause the actual developments and results to differ materially from those expressed in the said intentions, expectations or predictions.*
- *This document does not constitute an offering or an invitation to acquire or subscribe shares in accordance with Act 24/1988, of 28 July, on the Securities Market, Royal Decree-Act 5/2005, of 11 March, and/or Royal Decree 1310/2005, of 4 November, and their implementing regulations.*
- *This statement should be taken into account by all persons or institutions who may have to take decisions or prepare or disseminate opinions relating to securities issued by the FCC Group. Such persons are invited to consult the documentation and public information communicated or registered by the FCC Group with the Spanish National Securities Market Commission.*
- *This document contains financial information that has been audited and prepared in accordance with International Financial Reporting Standards (IFRS).*